

# PPX Learning Event

## Challenges in Implementing New Methodologies and Managing Data

SUSAN MORRIS  
&  
LOUISE-MICHELLE VERRIER

10 April 2019



Canadian Institutes of  
Health Research

Natural Sciences and Engineering  
Research Council of Canada

Social Sciences and Humanities  
Research Council of Canada

Instituts de recherche en  
santé du Canada

Conseil de recherches en sciences  
naturelles et en génie du Canada

Conseil de recherches en  
sciences humaines du Canada

# NSERC and SSHRC

Core Responsibility	Responsabilité essentielle
Funding Social Sciences and Humanities/Natural Sciences and Engineering Research and Training	Financement de la recherche et formation en sciences humaines/Sciences naturelles et génie

- 3 equivalent Programs in Program Inventory
  - Insight /Discovery Research
  - Research Partnerships
  - Research Training and Talent Development



Canadian Institutes of  
Health Research

Instituts de recherche en  
santé du Canada

Natural Sciences and Engineering  
Research Council of Canada

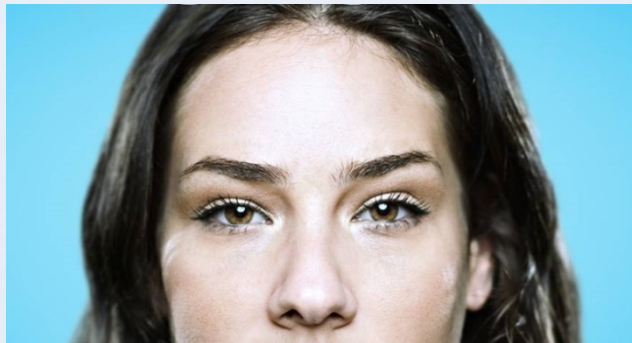
Conseil de recherches en sciences  
naturelles et en génie du Canada

Social Sciences and Humanities  
Research Council of Canada

Conseil de recherches en  
sciences humaines du Canada

# Research Training and Talent Development

- Support to graduate students and postdoctoral fellows during their studies
  - To attract and, retain highly qualified personnel
  - To develop the next generation of researchers and leaders across society
- Essential to build the human capital required to enable a strong, globally competitive research and innovation system in Canada



Canadian Institutes of  
Health Research

Natural Sciences and Engineering  
Research Council of Canada

Social Sciences and Humanities  
Research Council of Canada

Instituts de recherche en  
santé du Canada

Conseil de recherches en sciences  
naturelles et en génie du Canada

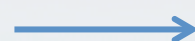
Conseil de recherches en  
sciences humaines du Canada

# Academic Path and Agency Support

Masters



Ph.D.

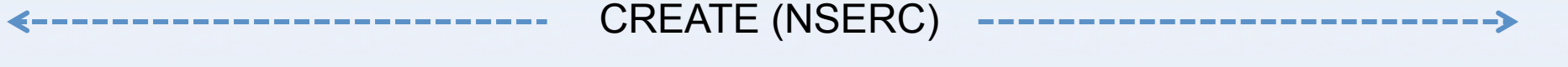


PDF

PGS-M (NSERC)  
CGS-M

Doctoral Fellowships (SSHRC)  
PGS-D (NSERC)  
CGS-D  
Vanier CGS

PDFs (NSERC, SSHRC)  
Banting PDFs



CREATE (NSERC)



Canadian Institutes of  
Health Research

Natural Sciences and Engineering  
Research Council of Canada

Social Sciences and Humanities  
Research Council of Canada

Instituts de recherche en  
santé du Canada

Conseil de recherches en sciences  
naturelles et en génie du Canada

Conseil de recherches en  
sciences humaines du Canada

# Research Training Results

- **Departmental Result: Canada has a pool of highly skilled people in the SSH / NSE**
- Proportion of award holders who are underrepresented individuals
- Number of research trainees supported
- Percentage of research trainees that go on to work in a research position

... but there is a lot more to measure!



Canadian Institutes of  
Health Research

Natural Sciences and Engineering  
Research Council of Canada

Social Sciences and Humanities  
Research Council of Canada

Instituts de recherche en  
santé du Canada

Conseil de recherches en sciences  
naturelles et en génie du Canada

Conseil de recherches en  
sciences humaines du Canada

# Results measurement

- Talent Achievement Report (SSHRC)
  - Completed by awardee - mandatory
  - Within 6 months after the award end-term
  - Built like a short survey
  - Hosted on an external platform
- Exit surveys & Follow-up surveys 7 years post-award (NSERC)
- Focus on Outcomes, Collaborations, Skills, Knowledge mobilization, Distinctions, Career development, etc.



Canadian Institutes of  
Health Research

Natural Sciences and Engineering  
Research Council of Canada

Social Sciences and Humanities  
Research Council of Canada

Instituts de recherche en  
santé du Canada

Conseil de recherches en sciences  
naturelles et en génie du Canada

Conseil de recherches en  
sciences humaines du Canada

# Variables of Interest

- Excellence
- Degree completion / Time to completion
- Accumulation of debt
- % Master's students pursuing PhDs; PhDs taking up postdoctoral fellowships
- Research production / Collaboration
- Development of research and professional skills
- International exposure
- Employment status (Sector, Research intensity)



Canadian Institutes of  
Health Research

Natural Sciences and Engineering  
Research Council of Canada

Social Sciences and Humanities  
Research Council of Canada

Instituts de recherche en  
santé du Canada

Conseil de recherches en sciences  
naturelles et en génie du Canada

Conseil de recherches en  
sciences humaines du Canada

# Challenges (1/3)

- Tri-Agency considerations
  - Discipline-based cultures
- Declining response rates
- Appropriateness and accessibility of comparison groups
  - Unsuccessful applicants
  - Awardees of similar programs
  - Student population



Canadian Institutes of  
Health Research

Natural Sciences and Engineering  
Research Council of Canada

Social Sciences and Humanities  
Research Council of Canada

Instituts de recherche en  
santé du Canada

Conseil de recherches en sciences  
naturelles et en génie du Canada

Conseil de recherches en  
sciences humaines du Canada

# Challenges (2/3)

- Incrementality
  - Attribution of “what would have happened in the absence of the program” particularly challenging
  - Expected results stemming from program support vs. selection of candidates
  - Results for Canadians



Canadian Institutes of  
Health Research

Natural Sciences and Engineering  
Research Council of Canada

Social Sciences and Humanities  
Research Council of Canada

Instituts de recherche en  
santé du Canada

Conseil de recherches en sciences  
naturelles et en génie du Canada

Conseil de recherches en  
sciences humaines du Canada

# Challenges (3/3)

- Longer-term trajectory missing
  - What is the ultimate advantage for GoC to fund scholarships?
  - We would like to link to academic & life long career outcomes



Possibilities are arising  
using data linkage



Canadian Institutes of  
Health Research

Instituts de recherche en  
santé du Canada

Natural Sciences and Engineering  
Research Council of Canada

Conseil de recherches en sciences  
naturelles et en génie du Canada

Social Sciences and Humanities  
Research Council of Canada

Conseil de recherches en  
sciences humaines du Canada

# Post-secondary Administrative Data Pilot Project

- Four institutions
- Phase I:
  - award recipients and students paid from grants vs. overall population
  - time to completion, completion rates
- Phase II
  - discontinuity analysis
  - link with Statistics Canada tax data



Canadian Institutes of  
Health Research

Natural Sciences and Engineering  
Research Council of Canada

Social Sciences and Humanities  
Research Council of Canada

Instituts de recherche en  
santé du Canada

Conseil de recherches en sciences  
naturelles et en génie du Canada

Conseil de recherches en  
sciences humaines du Canada