



Research
Manitoba

CAHS impact model reframed

Manitoba's experience in adapting the CAHS model

Expanded

In 2014, the Manitoba Government announced the creation of Research Manitoba. Its mandate:

- Promote, support, and coordinate the funding of research in the disciplines of health, natural sciences and engineering, and the social sciences and humanities



Why we measure

- To be accountable and transparent;
- To inform Research Manitoba's decision making, planning and programming;
- To encourage a proactive and prospective measurement and monitoring of research impacts among researchers, funders and users of knowledge; and
- To communicate the value and benefit of research to funders, stakeholders and the public through impact stories.

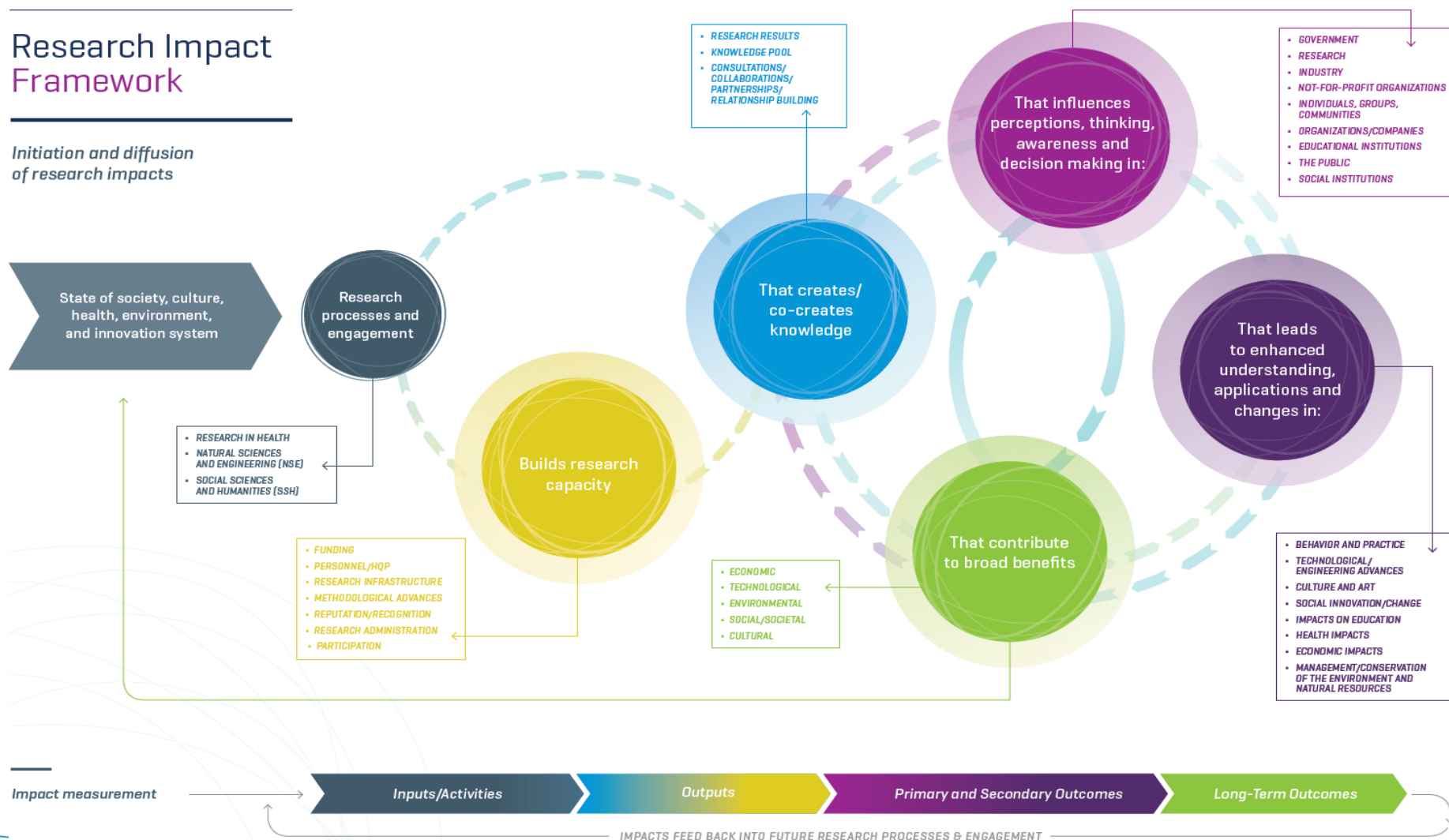


Research Manitoba impact framework



Research Impact Framework

Initiation and diffusion of research impacts



Approach to adapting CAHS

1. Review of other frameworks, literature
2. Discussions: internal, with FRQS
3. Consultations with researchers
 - a. In person meetings
 - b. Feedback by email
 - c. Survey (ongoing)

Materials presented

- Research Manitoba impact framework
 - Glossary + definitions
 - Impact categories & subcategories
 - Indicators
- 

Lessons & reflections

- Gives a sense that research mostly happens in higher education institutions
- Seen as linear in nature
- Importance of inclusive language
- Buy-in of researchers
- Need to be on same page



Next steps – work in

1. Revise and discuss with researchers
2. Use in case studies in NSE and SSH
3. Incorporate in collection & reporting system
 - Inform end of grant/progress reports
 - Impacts data will populate our impacts database
 - Integrate into GMS
4. Define the strategic value of supported research projects
5. Communicate the value and benefits of research

